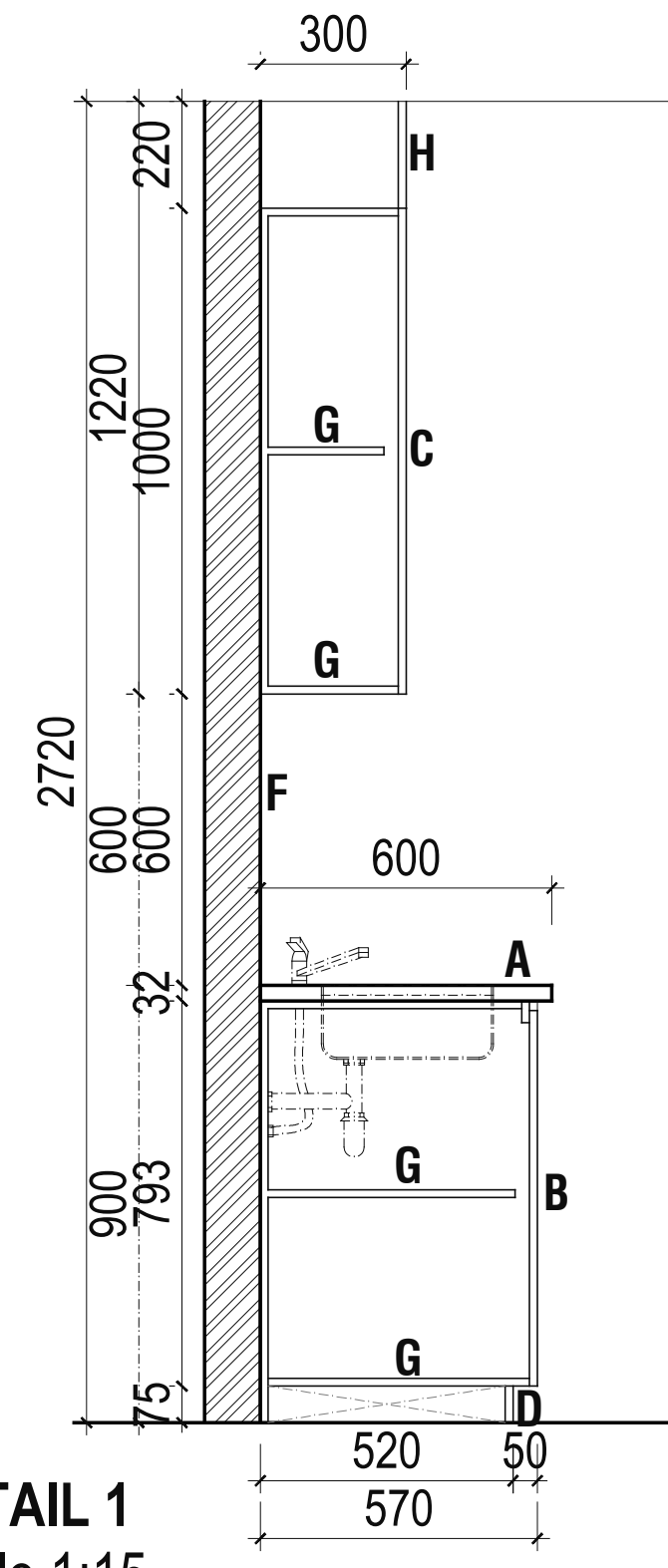
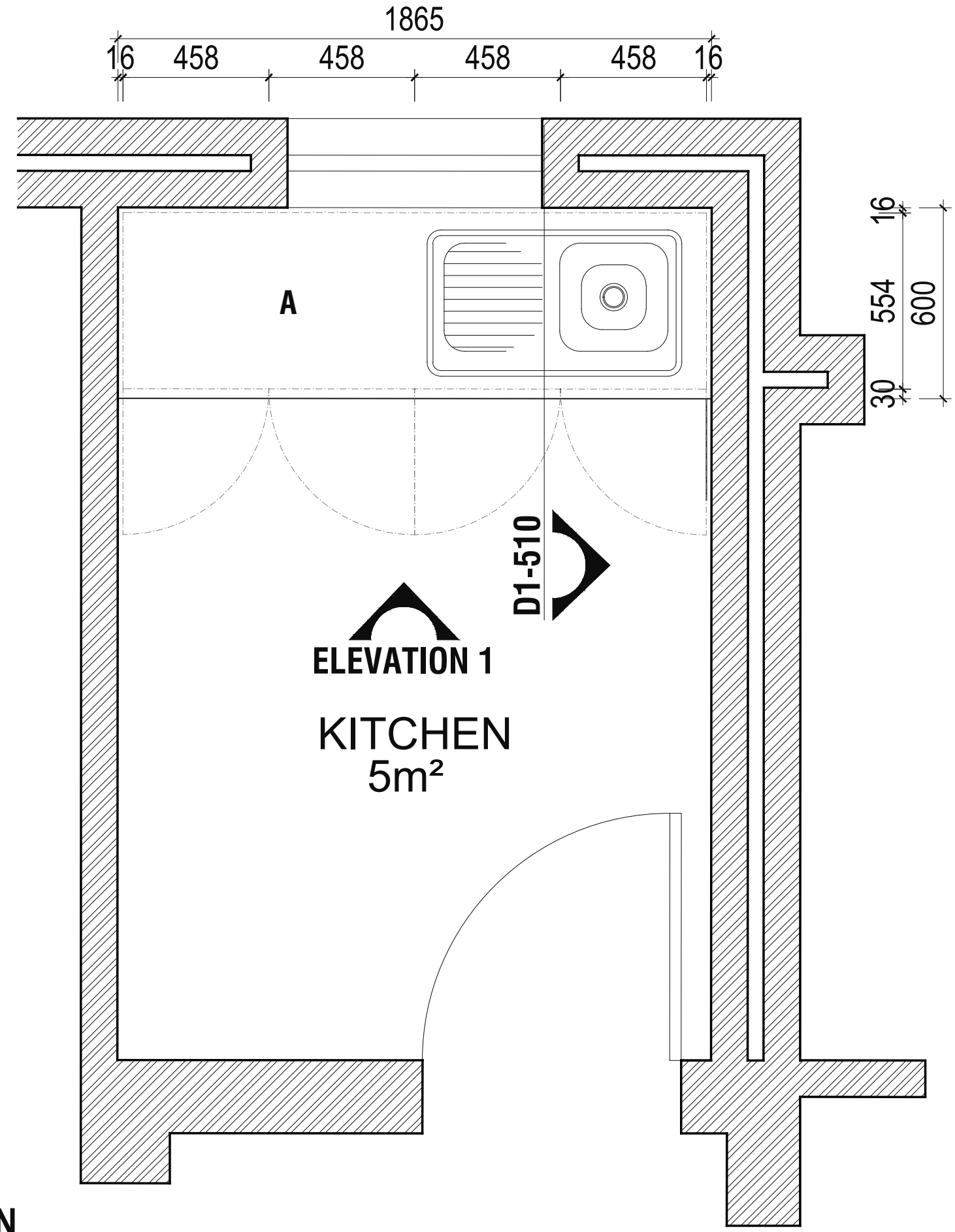


ELEVATION 1
Scale 1:15



DETAIL 1
Scale 1:15



PLAN
Scale 1:15



NOTES

A - KITCHENETTE TOP
Provide a 32mm Zim Black Granite profile top surface

B - BOTTOM CUPBOARDS
Provide 16mm purpose white melamine supawood doors and fix in approved manner. Provide approved runners and hinges, by specialist. All interior carcass to be in white melamine finish. Provide bin where indicated. All kitchenettes to receive approved under counter Geyser. All handles to be -
Item no: 1595
Finger Grip 1 Flat Large Grip
Material: Aluminium
Code: 297mm | RAH 859

C - TOP CUPBOARDS
Provide 16mm purpose white melamine supawood pull up doors and swing doors fixed in approved manner. Provide approved hinges by specialist. All interior carcass to be in white melamine finish. Provide 90° opening radius Gas Support door lift system for pull up doors. All handles to be -
Item no: 1132
Finger Grip 1 Flat Small
Material: Aluminium
Code: 497mm | RAH 806 / 897mm | RAH 809

C.1 - TOP CUPBOARDS
Provide 16mm purpose made white melamine supawood pull up doors fixed in approved manner. Provide approved hinges by specialist. All interior carcass to be in white melamine finish. All handles to be -
Item no: 1132
Finger Grip 1 Flat Small
Material: Aluminium
Code: 497mm | RAH 806 / 897mm | RAH 809

D - KICKPLATE
Provide approved 75mm brushed alluminum Formica kickplate and fix in approved manner.

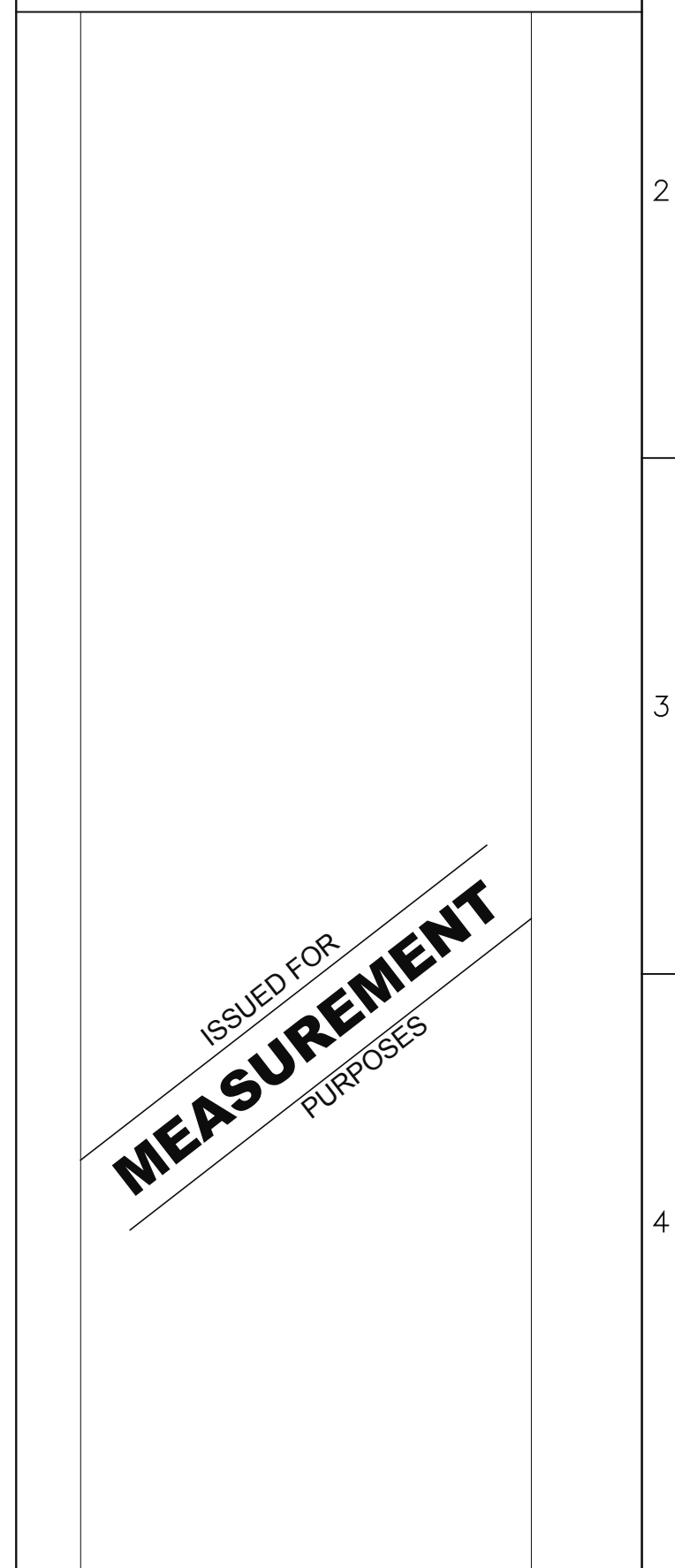
E - DRAWERS
Provide purpose made 16mm white melamine supawood drawers as indicated, fix to cupboard in approved manner, by specialist.

F. BACKSPLASH
Provide 300mm x 600mm super white ceramic tile. Laid as per indicated, 1mm joint with white grout.

G.SHELVES
Provide 16mm thick white melamine board shelves. Fix in approved manner.

H. TOP PANEL
Provide 16mm thick white melamine board. Fix in approved manner.

- GENERAL NOTES:
1. NO DIMENSIONS TO BE SCALED.
 2. DIMENSIONS TO BE VERIFIED ON SITE BEFORE COMMENCING ANY SITE WORK OR SHOP DRAWINGS.
 3. DIMENSIONS ARE TAKEN TO CENTRE LINES OR STRUCTURAL SURFACES AND DO NOT INCLUDE FINISHES EXCEPT WHERE OTHERWISE STATED.
 4. THE ARCHITECT IS TO BE NOTIFIED OF ANY DISCREPANCIES BETWEEN THIS DRAWING AND ANY OTHER DRAWING OR CONSTRUCTION DOCUMENTS INCLUDING THOSE ISSUED BY CONSULTANTS AND NOMINATED SUB-CONTRACTORS BEFORE COMMENCING WORK.
 5. MINIMUM STRENGTH POF CONCRETE 21Mpa



REV.	DESCRIPTION	DATE
CLIENT SOUTHERN AFRICAN DEVELOPMENT COMMUNITY		
JOB TITLE SADC STANDBY FORCE REGIONAL LOGISTICS DEPOT, AT RASESA, GABORONE, BOTSWANA,		
DWG TITLE FUEL POINT & CAR WASH GROUND FLOOR PLAN - Kitchen 1		
SCALE	AS SHOWN	JOB No. G649
DATE	FEB 2022	DRAWN BY KM
REV.		CHECKED BY FO
Project Team: Architect: FMA Architects Quantity Surveyor: Turner & Townsend (Pty) Ltd. Electrical Engineers: G4 Consulting Engineers (Pty) Ltd. Mechanical Engineers: G4 Consulting Engineers (Pty) Ltd. Civil Engineers: Botswana Services International (Pty) Ltd. Structural Engineers: Botswana Services International (Pty) Ltd.		
 FMA ARCHITECTS (PTY) LTD. P.O. BOX 201504 BONTLENG GABORONE, BOTSWANA TEL: 3959812 FAX: 3959814 E-MAIL: fmagabs@info.bw		
DRWG. No. SADC/ARCH/2/010/1-510		